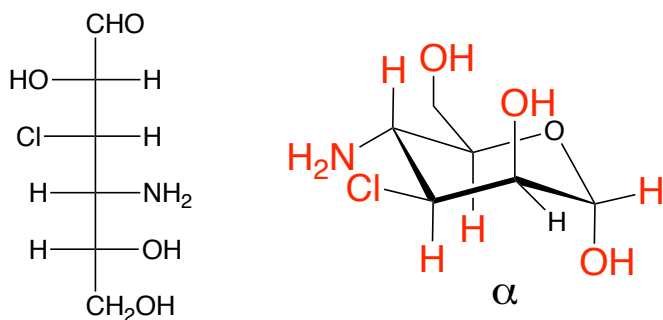


Chemistry 2521 Quiz 6

BJM 4/22/2026

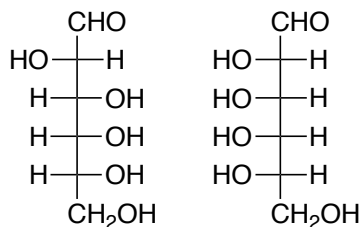
Name: Key

1. (10 points) Using the template given, complete the chair form for the modified sugar.
Draw the α -isomer and all of the hydrogen atoms.

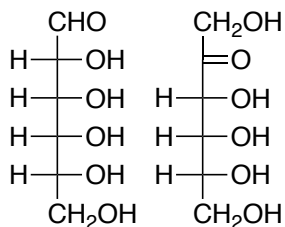


2. (15 points) How are the two compounds in each pair related? Choose from:

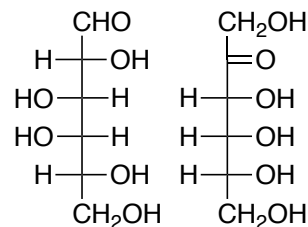
identical compounds
enantiomers
diastereomers
anomers
constitutional isomers
unrelated



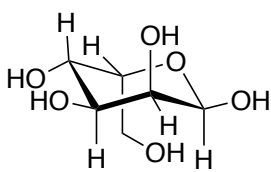
diastereomers



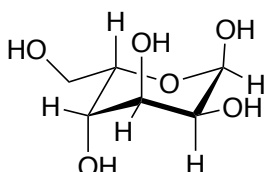
const. isomers



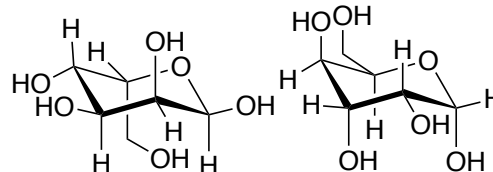
const. isomers



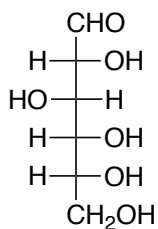
identical



enantiomers

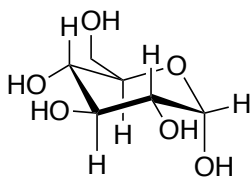


2. (4 points) Draw the structure of glucose



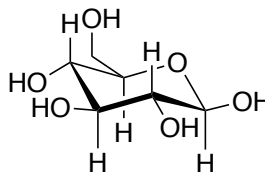
D-glucose

OR



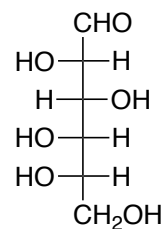
alpha-D-glucose

OR



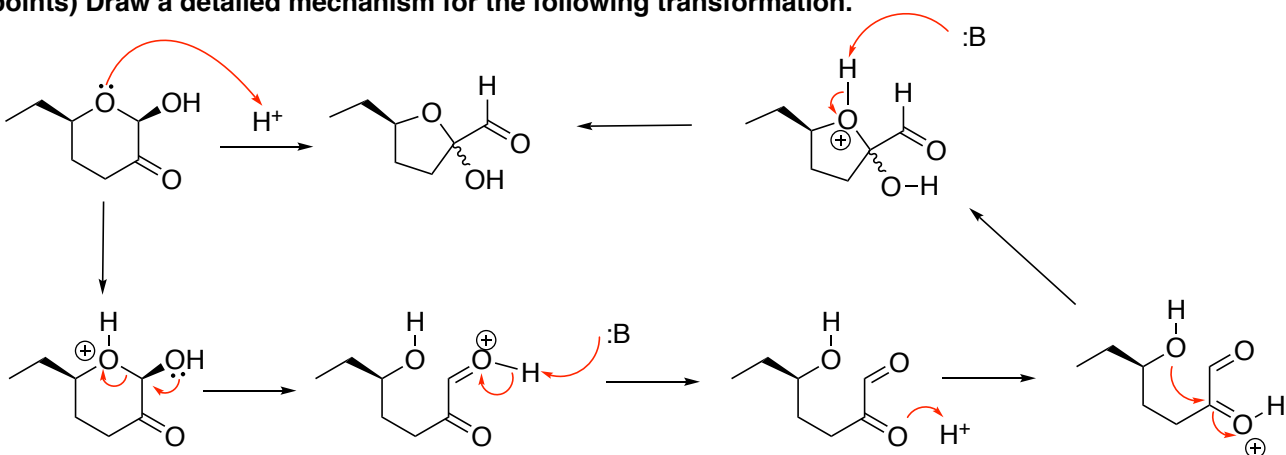
beta-D-glucose

OR

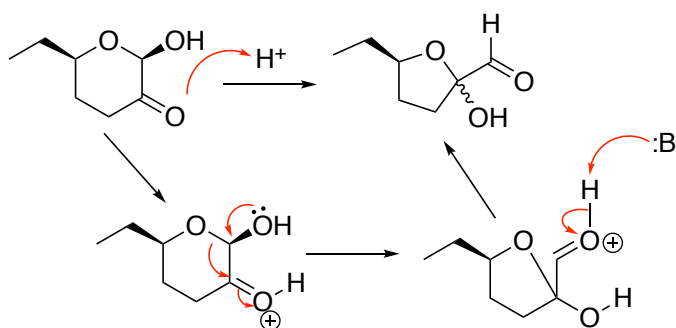


L-glucose

4. (10 points) Draw a detailed mechanism for the following transformation.



alternate expected (but not expected) mechanism:



5. (6 points) Give an appropriate reagent for each of the following transformations.

